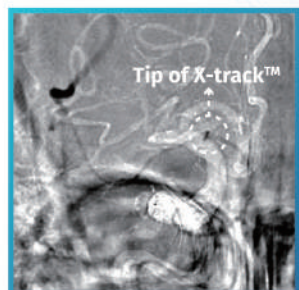


Case 1

Male, 73Y, Combined with 4mm*25mm NeuroHawk™, 6F 125cm X-track™



Right MCA, M1 segment occlusion



X-track™ access to M1 segment



Combined technique with stent retriever (NeuroHawk™)

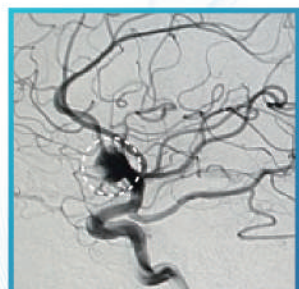


Complete recanalization after first pass (mTICI 3)

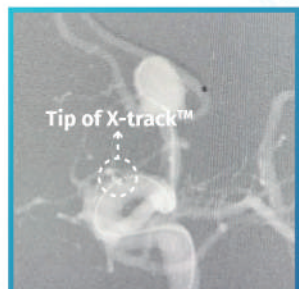
*NeuroHawk™ Thrombectomy Device is a product of MicroPort NeuroTech

Case 2

Male, 69Y, Stent-assisted Coiling (NUMEN™ Coil Embolization System), 6F 115cm X-track™



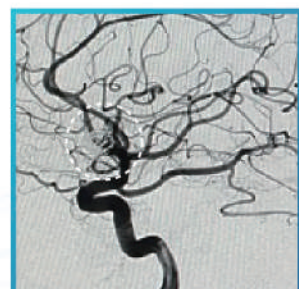
AComA aneurysm



X-track™ access to C6 Segment



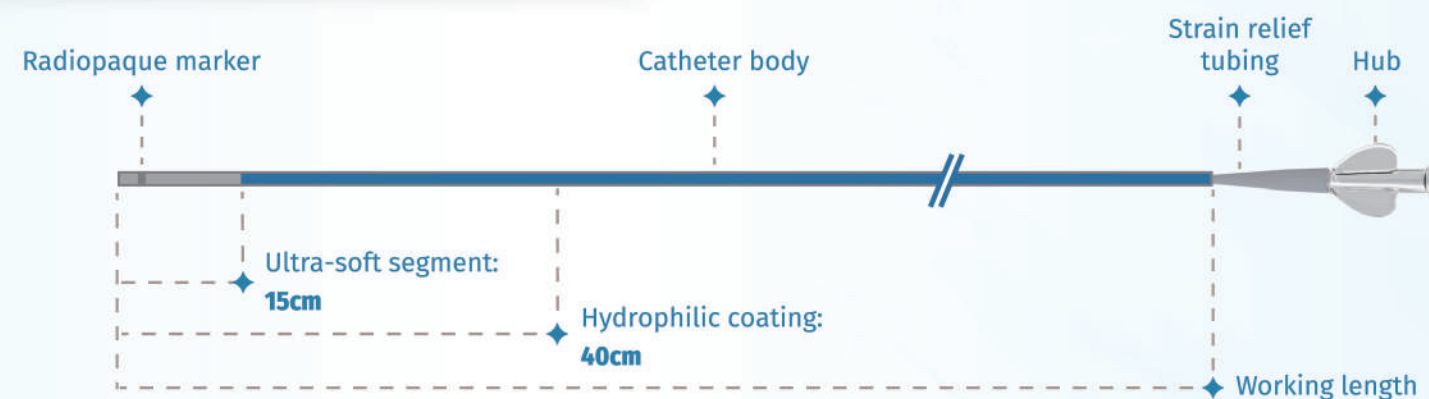
Stent-assisted coiling (NUMEN™)



Successful occlusion after procedure

*NUMEN™ Coil Embolization System is a product of MicroPort NeuroTech

Product Overview



Product Specification

Specification	Catheter size (French)	Inner diameter (inch/mm)	Outer diameter			Effective length (cm)
			(French)	(inch)	(mm)	
DC5-115	5F	0.055 /1.40	≤5.5	≤0.072	≤1.84	115
DC5-125						125
DC5-135						135
DC6-115	6F	0.070 /1.78	≤6.6	≤0.086	≤2.19	115
DC6-125						125
DC6-135						135

MicroPort NeuroTech

Redefining
Distal Reachability

MicroPort NeuroTech

MicroPort NeuroTech (Shanghai) Co., Ltd.
1661 Zhangdong Road, Zhangjiang High-tech Park,
Pudong New District, Shanghai, PRC
TEL: (86) (21) 38954600-55200
EMAIL: NT_IBD@microport.com
Website: www.medneurotech.com
LinkedIn: www.linkedin.com/company/microport-neurotech

2024 Q1 Copyright© MicroPort NeuroTech Co., Ltd. All rights reserved.
NTBXR24-V01 Reg. ANVISA Number: 81667100069

Indications

This product is indicated for use in facilitating the insertion and guidance of appropriately sized interventional devices into the neurovascular system.

Contraindications

No known contraindications.

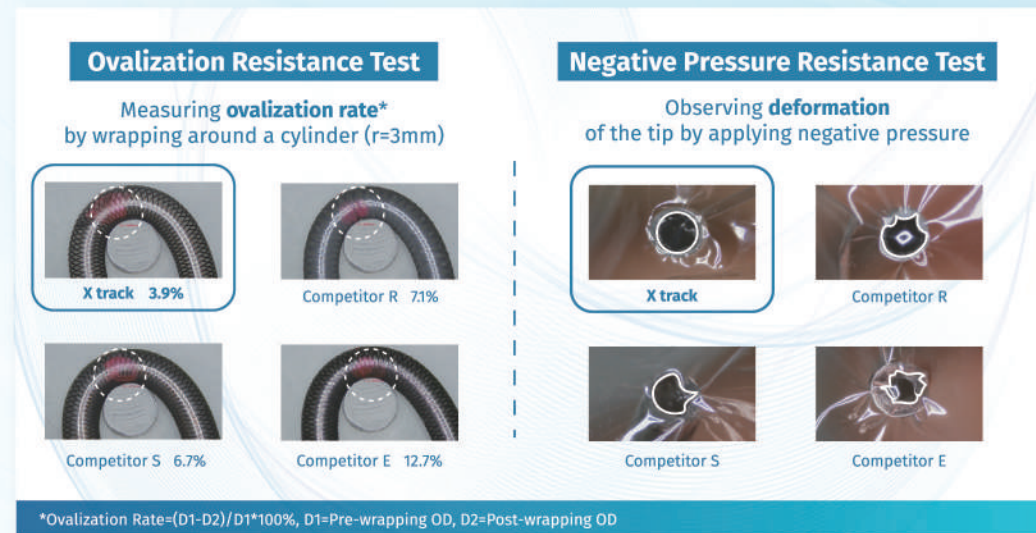
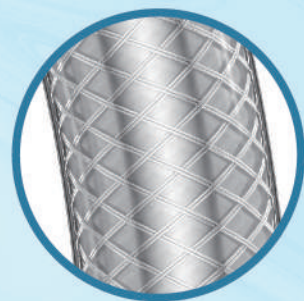


X-track™
Intracranial Distal Access Catheter

Durability

Enhanced Kink & Ovalization Resistance

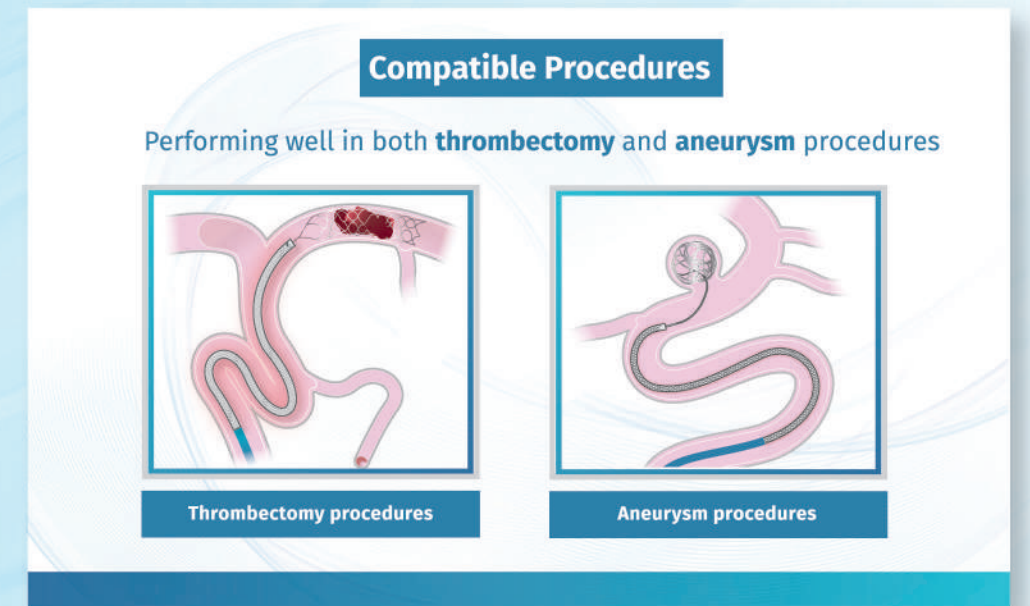
- ◆ **Dual Stainless Steel Wire Braided Structure:**
Excellent support and kink/ovalization resistance
- ◆ **Enhanced Tip Design:**
Reinforced resistance to negative pressure without sacrificing softness



Versatility

Expanded Options & Improved Efficiency

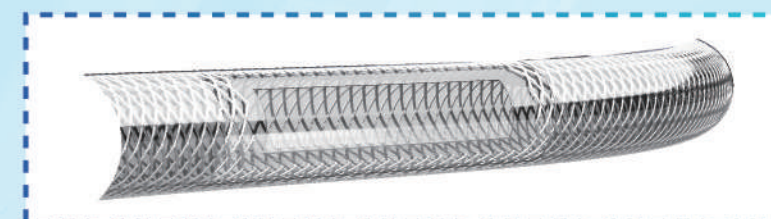
- ◆ **6F 0.070"**: Suitable for multiple procedures, providing expanded clinical options
- ◆ **Large Bore**: Provide superior efficiency for thrombectomy procedures in ischemic stroke



Distal Accessibility

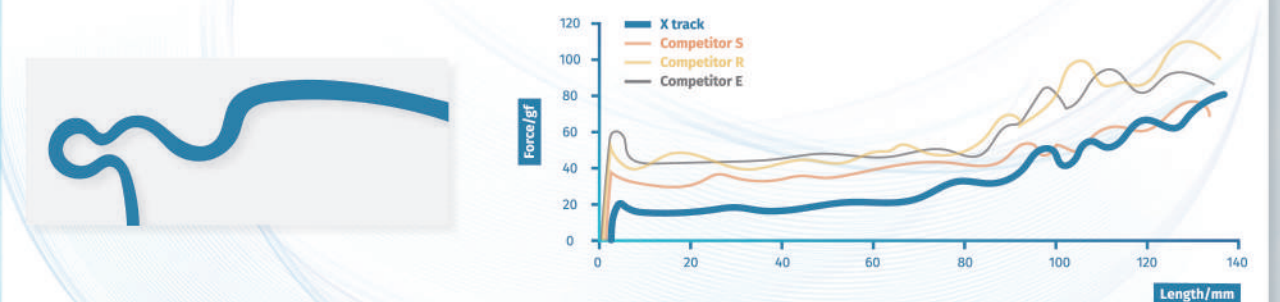
Smooth Delivery & Easy Navigation

- ◆ **40cm Hydrophilic Coating**: Efficient advancement of X-track™, effortlessly reaching the lesion
- ◆ **TPU Outer Layer & Polyolefin Inner Layer (Distal)**: Provide distal softness and easy navigation in tortuous vessels
- ◆ **PTFE Inner Layer (Proximal)**: Ensure smooth access for microcatheter and interventional devices
- ◆ **16 Transition Zones**: Seamless transition from proximal to distal, ensuring better trackability and tactile feedback



Push Resistance Test

Measuring **resistance** when pushing into a tortuous vascular model



*All the bench tests are based on consistent catheter size, conditions, environment, equipment, and operators. The test methods are saved in files ST-F-TC3-0125, ST-F-TC3-0118, and ST-F-TC3-0117. The bench test results may not necessarily be indicative of clinical performance.